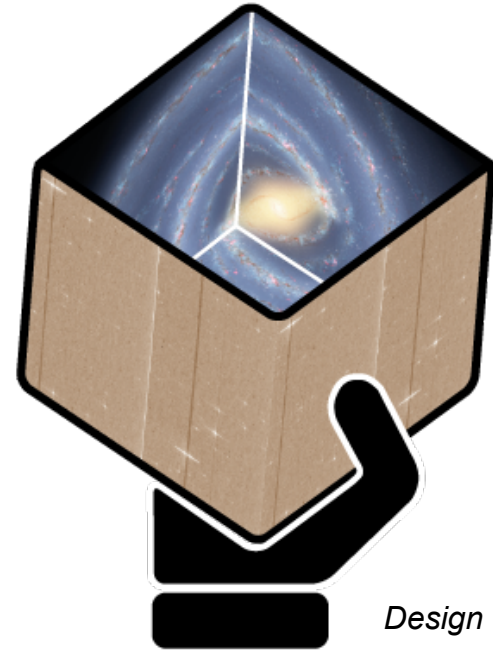


II reunión de la REG – Sitges enero 2013



gaia



Design C. Brown

Delivering the promise of Gaia

X. Luri & W.J. O'Mullane

Response writing process

- **Sept. 21: writers defined during ESTEC GAP meeting**
- **Dec. 9: first complete draft from writers**
- **Dec. 10-17: internal review by editorial committee**
- **Dec. 22 – Jan. 4: DPAC external review**
- **Jan. 8: draft sent to participants for last revision**
- **Jan. 10: submission**

Submission

Two documents sent to T. Prusti

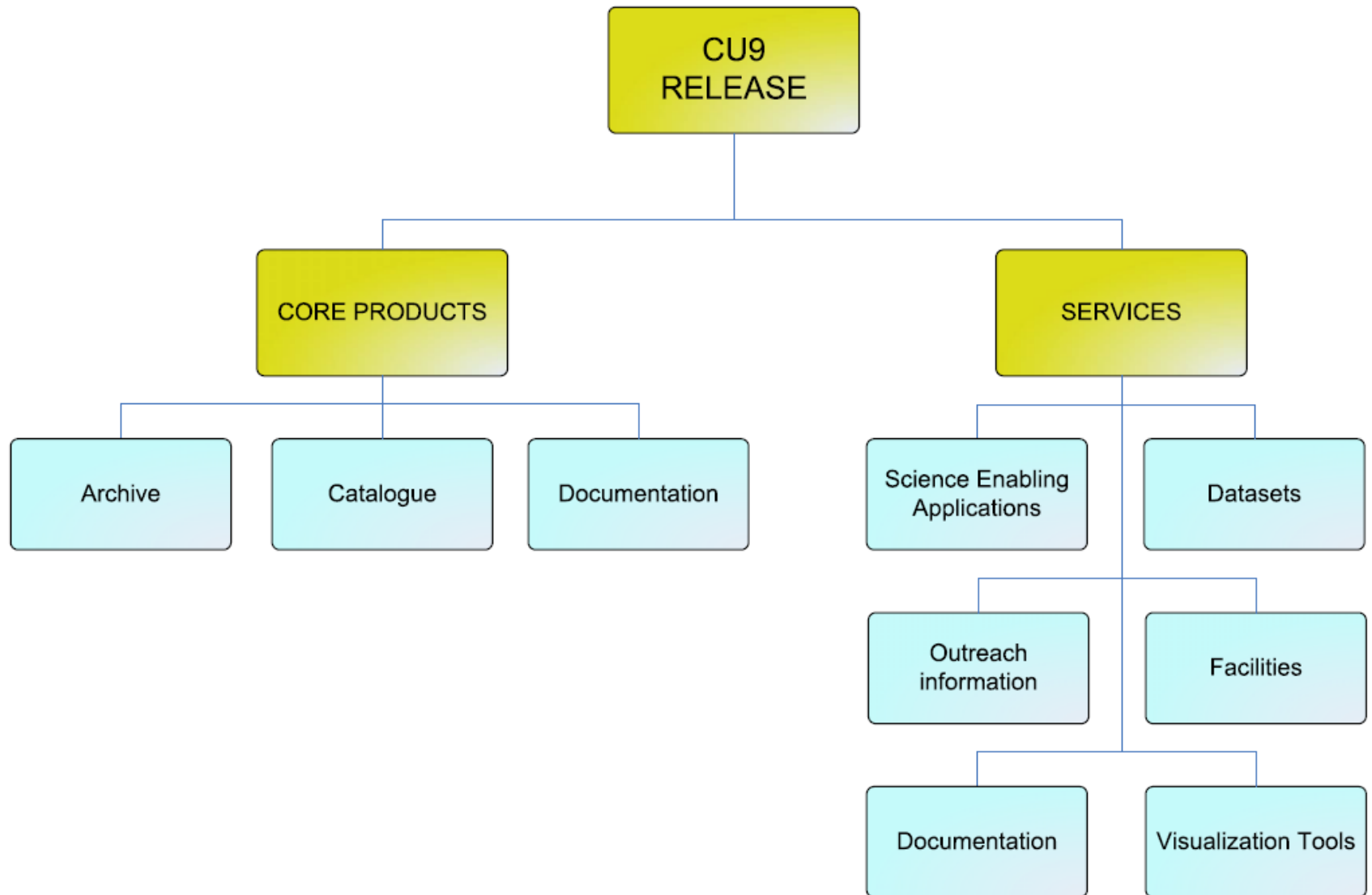
- **Formal response: 72 pages + support letters**
Austria, France (x2), Germany, Italy, Netherlands, Portugal, Spain, Sweden, UK
- **Appendix: 114 pages, bios + detailed WP description**
Will be used for the CU9 SPD

Goals

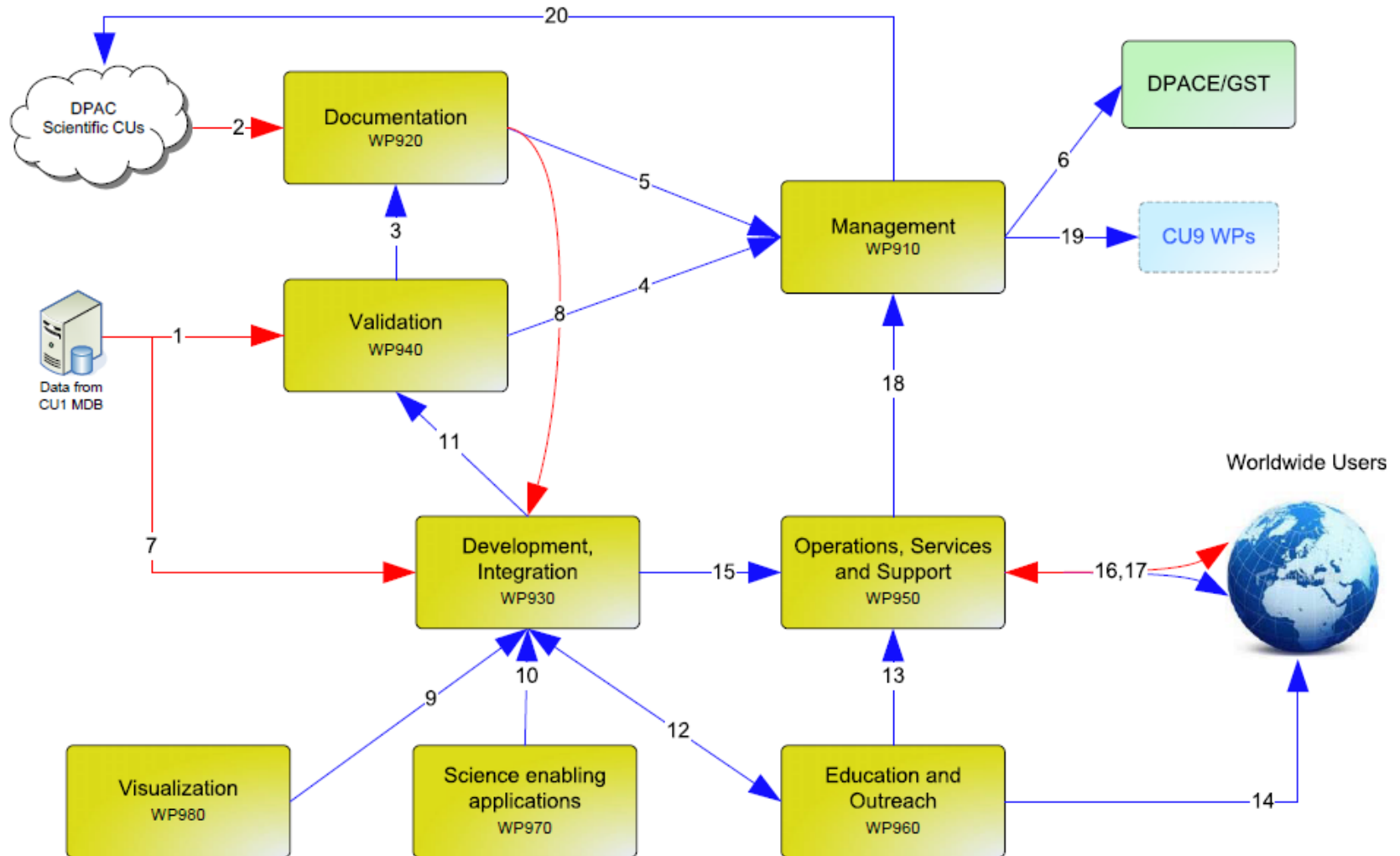
- A thoroughly validated and well documented set of Gaia data, ready for scientific exploitation.
- A functional, single point access to all Gaia science data, including user support.
- A defined API to the science data repository to allow the development of high throughput access applications and visualization tools.
- A set of advanced applications to allow for defined manipulation and visualization of the data.
- A set of tools and content for outreach, tailored for different targets (media, academic and general public) to maximize the social impact of the mission.



Product tree



Data flow



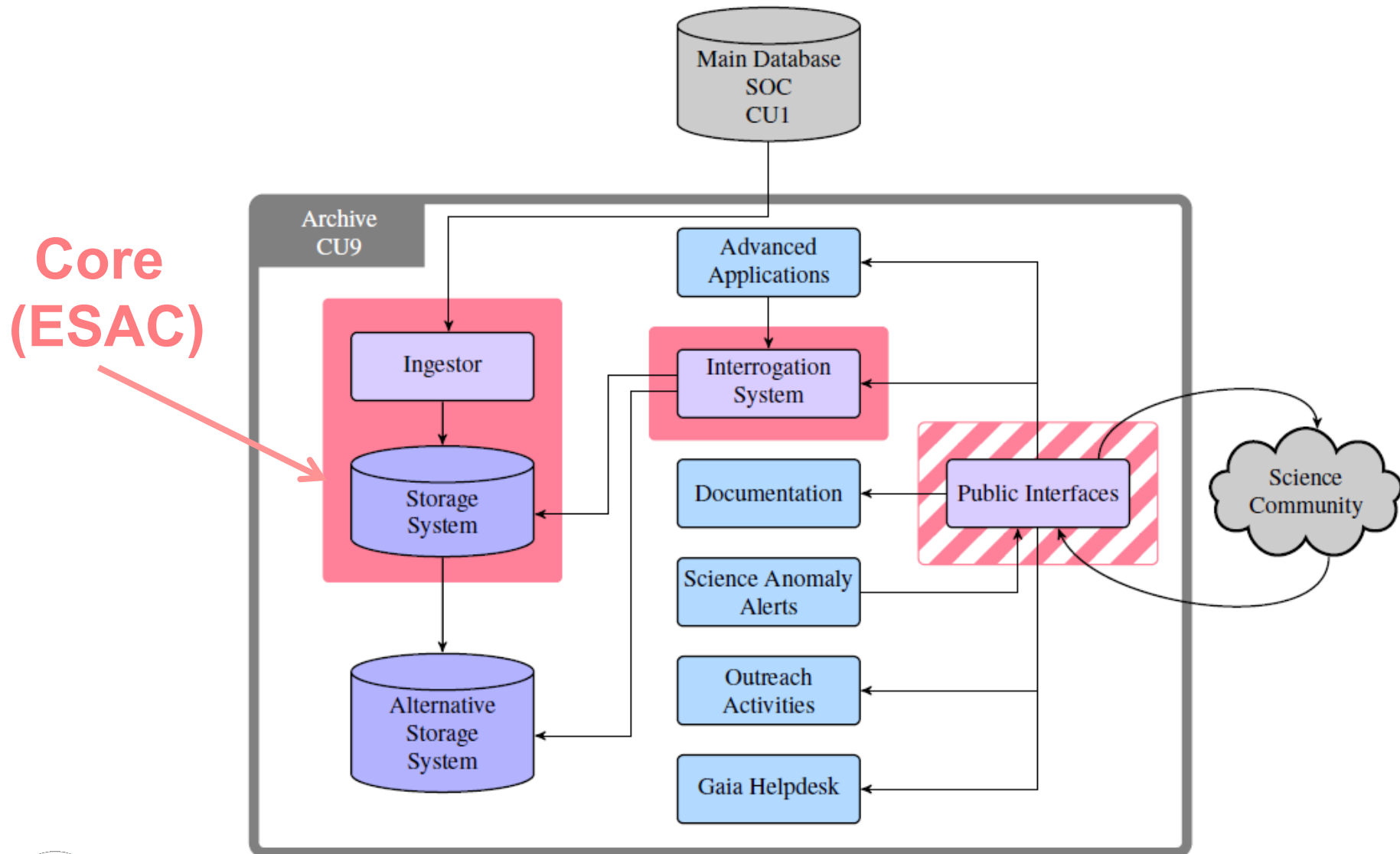
➡ Archive related content: MDB extract or CUs documentation
➡ Information / Services



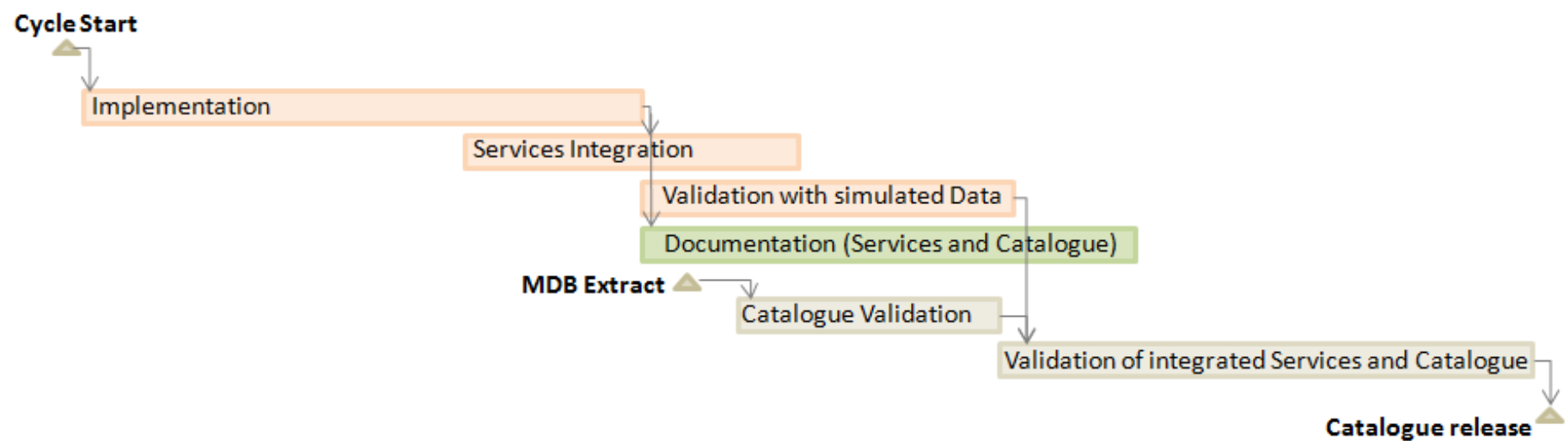
gaia

REG – Sitges enero 2013

Archive overview



Schedule tied to DPAC data releases



However, no specific release schedule assumed (although current one mentioned) to allow for future evolution of DPAC releases

High-level WP and proposed managers

WP910 Management: X. Luri & W. O'Mullane

WP920 Documentation: F. van Leeuwen & A. Brown

WP930 Archive: N. Hambly & J. Salgado

WP940 Validation: F. Arenou & P. di Mateo

WP950 Operations: E. Mercier & J. Hernandez

WP960 Outreach: S. Jordan & E. Masana

WP970 Science Enabling Tools: X.Luri & S. Jordan

WP980 Visualization: A. Moitinho & J. Alves

Structure

Following the standard DPAC-CU structure:

- CU-L (Luri), CU-T (Mullane), CU-QA (Gracia)
- Management committee by WP leaders
- Coordination with PO

Plus

- A representation of GREAT (Walton) in management meetings to ensure coordination with the scientific community
- External advisory group in order to provide independent advice from (outside DPAC) experts in astrophysics and engineering.



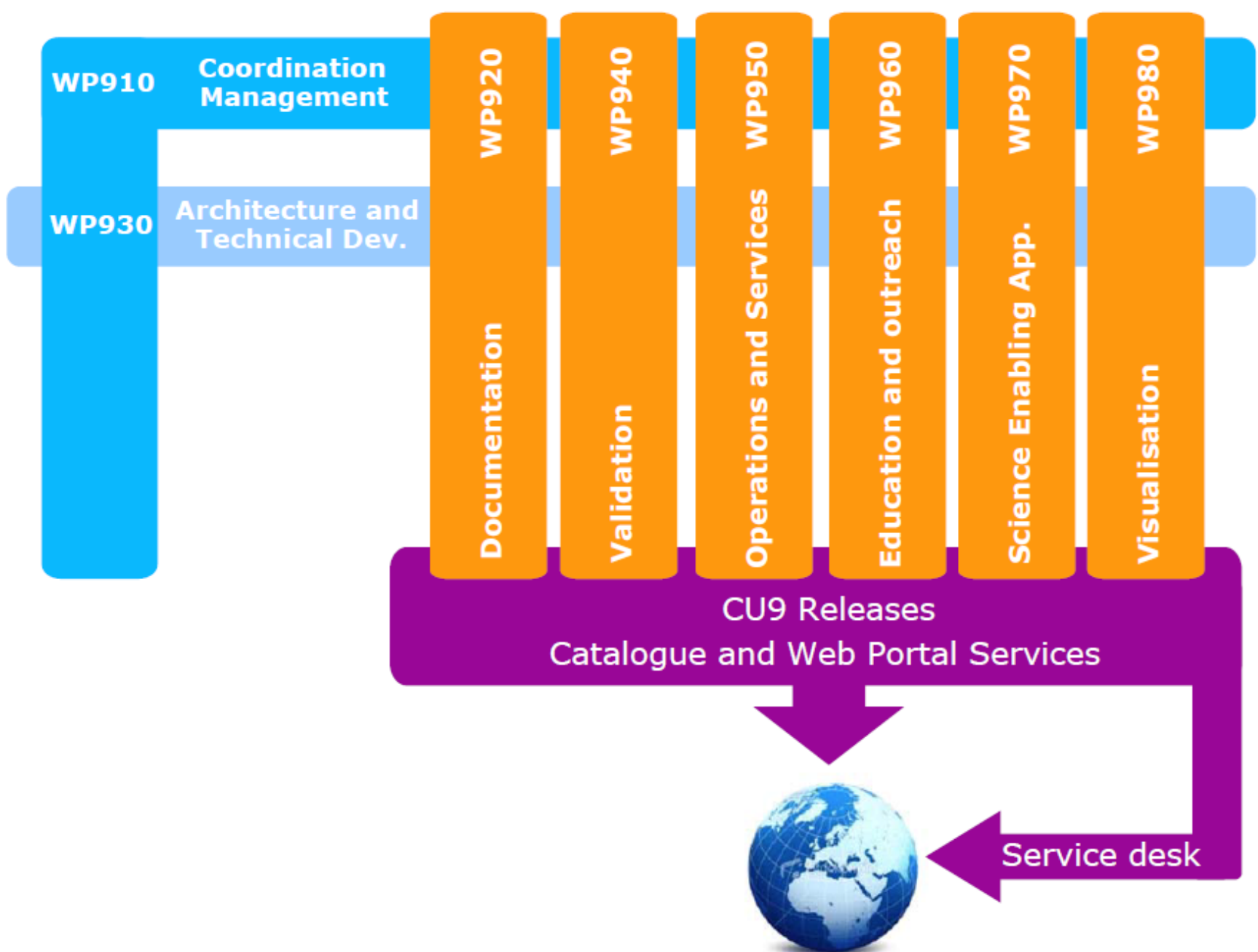
Effort

WP	Description	2013	2014	2015	2016	2017	2018- 2022	Total (SY)
910	Management	1.8	1.8	1.8	1.8	1.8	9.0	18.0
920	Documentation	1.5	1.4	1.1	1.4	2.5	3.5	11.4
930	Architecture Design/Development	7.35	7.85	7.6	4.9	4.3	19.5	51.5
940	Validation	6.5	8.4	7.9	8.4	10.4	29.7	71.3
950	Operations Services and Support	2.8	3.9	3.9	3.9	3.4	13.3	31.2
960	Education and Outreach	2.2	2.3	3.5	6.5	3.0	11.9	29.4
970	Science Enabling Applications	7.75	9.85	9.95	10.15	8.95	38.55	85.2
980	Visualisation	5.5	5.7	5.7	5.7	5.4	21.7	49.7
Total		347.7						

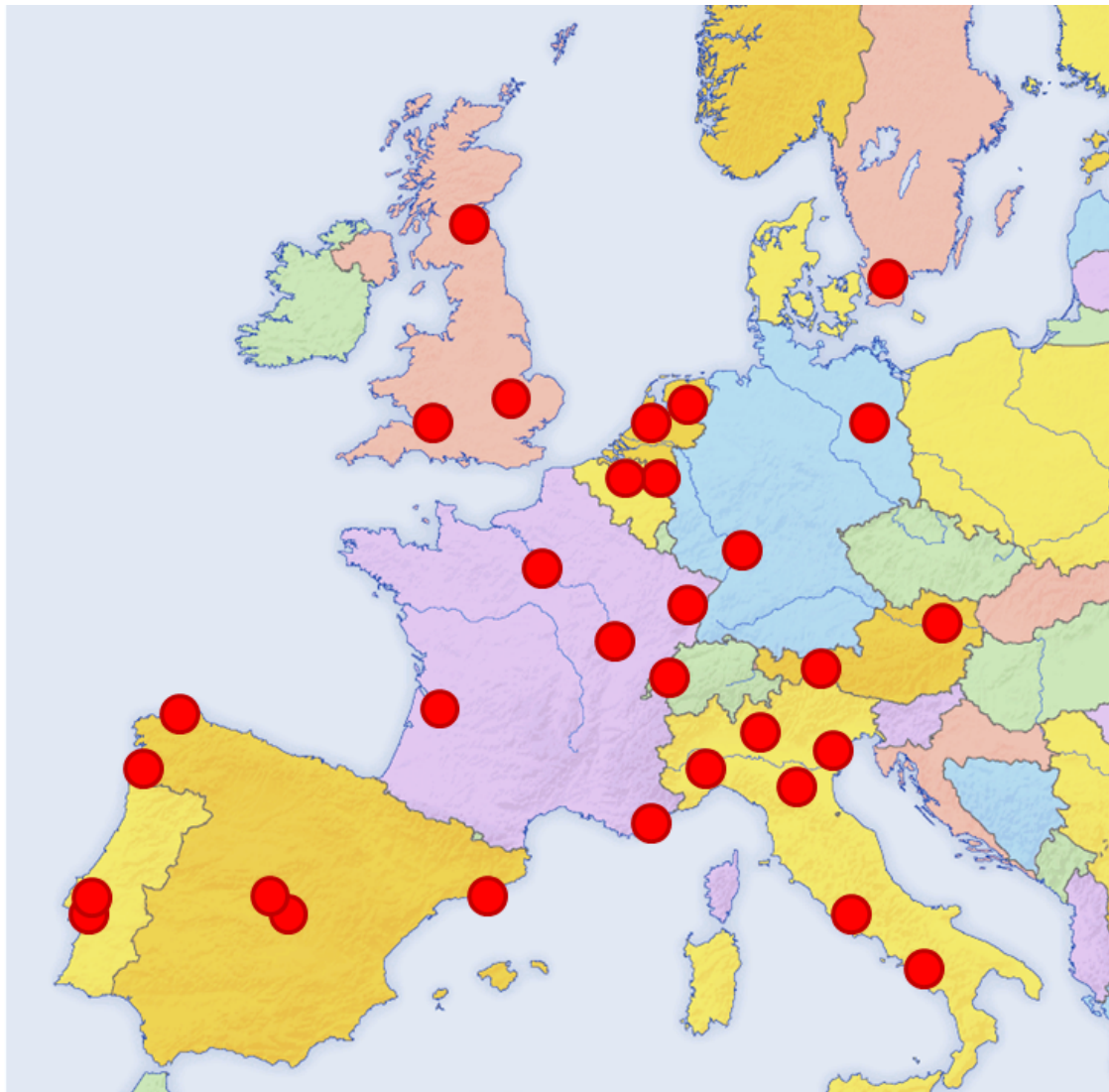
(detailed breakdown per sub-wp available on the response document)

A type flag has been defined for each WP in order to target in a more flexible way the effort required at this still provisional stage, pending detailed definition of tasks and funding confirmation by the national agencies:

- **Type 1:** mandatory work packages, strictly needed for the working of CU9 and that should be kept in all cases
- **Type 2:** in case of real necessity some of them can be dropped at the price of only partially fulfilling some of the CU9 goals



Geographical distribution of partners



gaia

REG – Sitges enero 2013

Data rights

Bound by the Science Management Plan (ESA/SPC(2006)45) which states that there will not be proprietary data rights for Gaia. Further reinforced by DPAC's own data access policy (FM-044) which is also binding for CU9.

Within CU9 access to actual Gaia data will be restricted as much as possible before actual data releases. Instead simulated Gaia data generated in coordination with CU2 (see Section 10.5) will be extensively used for development, testing and validation of software. In the cases where real data needs to be used the members of CU9 will be bound by the publication policy (FM-039).

To this respect, quoting the AO: “The SMP identifies the GST as the entity defining procedures for any early access to the data.”



Next steps

- **Wait for approval from ESA (AWG, SPC)**
- **MLA amendment may take some months (from previous DPAC MLA experience)**
- **Should we provisionally start the CU9 in advance of MLA signing? (in order to be ready at launch/commissioning)**
 - **CU9 kick-off during 2013? (April-March?)**