

# GENIUS

## The Gaia archive



**gaia**



*X. Luri*

*Universitat de Barcelona*

# Archive current contents

## External Catalogues

• Hipparcos & Hipparcos new red.	$1.2 \times 10^6$	rows
• IGSL (Initial Gaia Source List)	$1.2 \times 10^9$	rows
• 2MASS	$4.7 \times 10^8$	rows
• Tycho2	$2.5 \times 10^6$	rows
• UCAC4	$1.1 \times 10^8$	rows
• Hubble Source Catalogue v1.0	$2.9 \times 10^7$	rows

## Gaia

• Gaia DR1 catalogue	$1.1 \times 10^9$	rows
• TGAS	$2.0 \times 10^6$	rows

## Crossmatches

- Crossmatch tables between Hipparcos, 2MASS, Tycho2... and Gaia expressed as neighbourhood and best neighbour, e.g:
- AllWise-Gaia neighbourhood  $3.1 \times 10^8$  rows



# Archive simple form

EUROPEAN SPACE AGENCY ABOUT ESAC Jesus Salgado (jsalgado)

## gaia archive

HOME SEARCH STATISTICS VISUALIZATION HELP DOCUMENTATION VOSPACE SHARE ADMIN

Simple Form ADQL Form Query Results

Position File

Name  
 Equatorial

Target in  Circle  Box

Name  for  Radius

*pleiades resolved by Simbad*

Search in:  Gaia Source  Tycho-Gaia Astrometric Solution (TGAS)

Extra conditions

+ Add condition Filter:

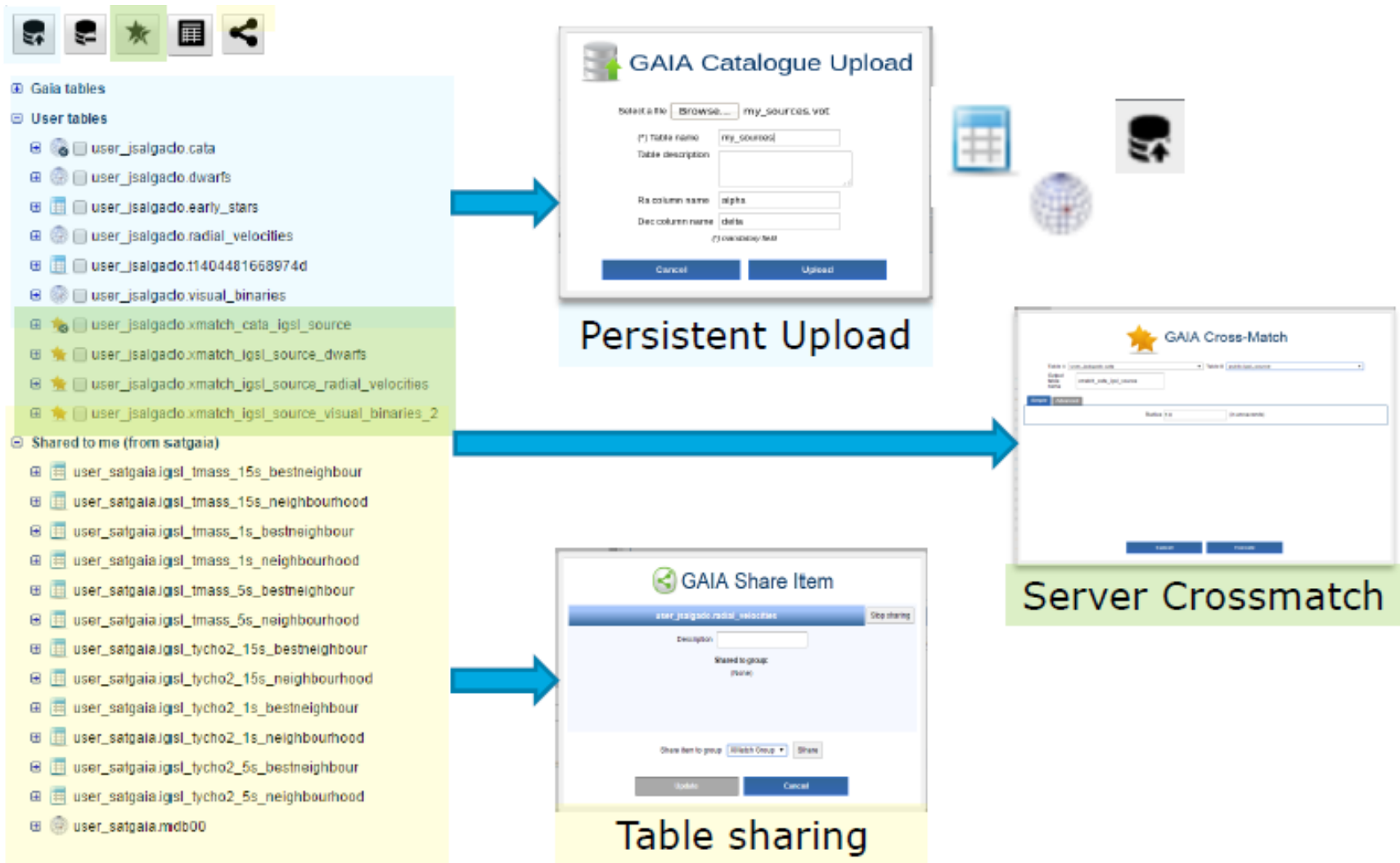
Display columns

Max. number of results:

COPYRIGHT 2000 - 2016 © EUROPEAN SPACE AGENCY. ALL RIGHTS RESERVED. [v1.1.0]



# Archive user schemas





# Archive CLI

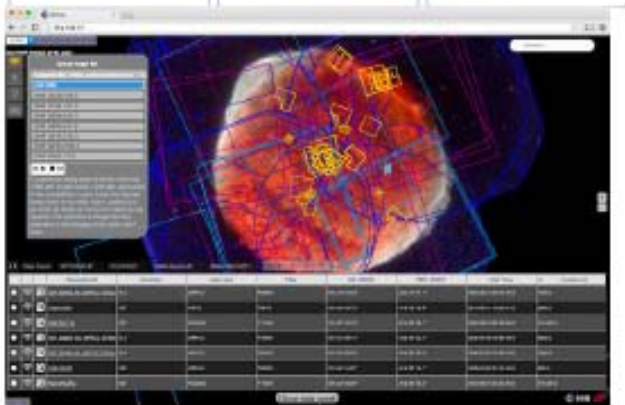
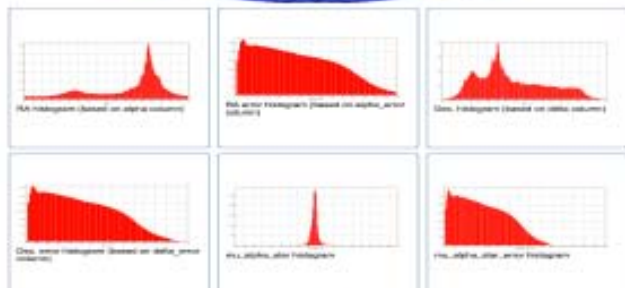
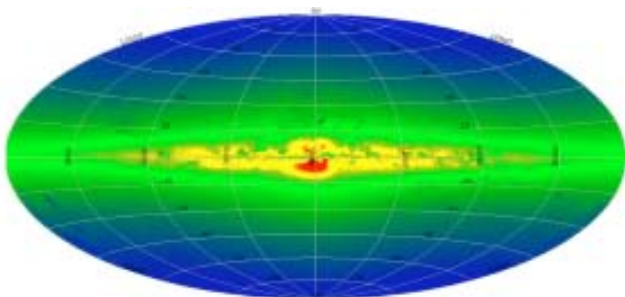
The screenshot shows the Gaia Archive website interface. The header includes the ESA logo and navigation links: HOME, SEARCH, STATISTICS, VISUALIZATION, HELP, DOCUMENTATION, VOSPACE, SHARE, ADMIN. The main content area is titled 'Command Line access' and provides instructions on how to use the TAP (Table Access Protocol) server. It lists two operation modes: Synchronous and Asynchronous. The Synchronous mode generates a response as soon as the request is received, while the Asynchronous mode starts a job that will be executed later. The page also mentions that the TAP server provides two access modes: public and authenticated. A code block shows a curl command to retrieve public tables: `curl "http://gea.esac.esa.int/tap-server/tap/tables"`. The page footer includes the copyright notice: 'COPYRIGHT 2000 - 2016 © EUROPEAN SPACE AGENCY'.



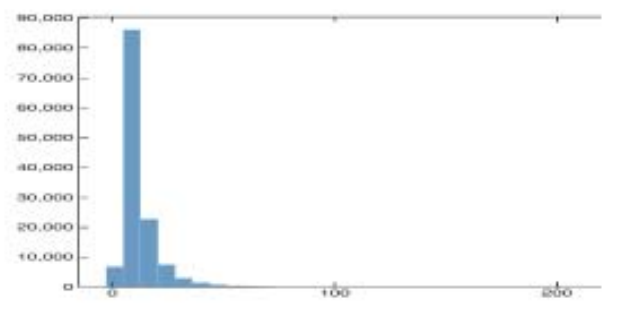
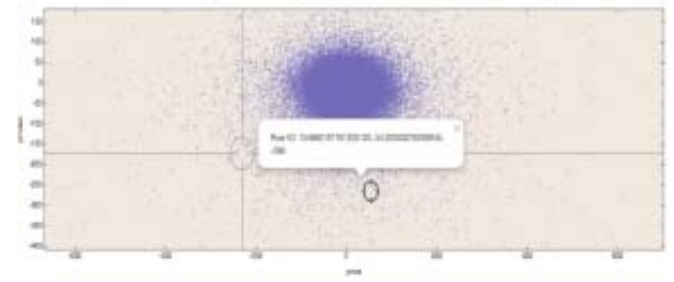
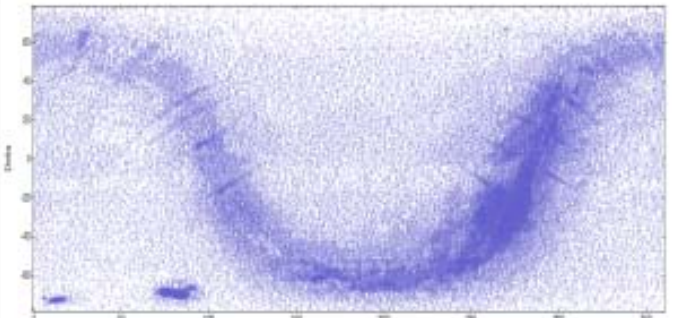
```
jsalgado ~ -bash - 80x24
Last login: Mon Oct 31 12:01:12 on ttys004
jsalgado@~$ curl -i -X POST --data "PHASE=run&LANG=ADQL&REQUEST=doQuery&QUERY=select+top+5+*+from+gaiadr1.gaia_source" "http://gea.esac.esa.int/tap-server/tap/async"
HTTP/1.1 303 303
Date: Mon, 31 Oct 2016 16:28:26 GMT
Server: Apache/2.2.15 (Red Hat)
Cache-Control: no-cache, no-store, max-age=0, must-revalidate
Pragma: no-cache
Expires: 0
X-XSS-Protection: 1; mode=block
X-Frame-Options: SAMEORIGIN
X-Content-Type-Options: nosniff
Set-Cookie: JSESSIONID=571AA9438CE1329D0646FF917F748201:path=/tap-server/:HttpOnly
Location: http://gea.esac.esa.int/tap-server/tap/async/14779313069470
Connection: close
Transfer-Encoding: chunked
Content-Type: text/plain;charset=ISO-8859-1

jsalgado@~$
```

# Archive visualization



- ❑ Visualization is a need
- ❑ Statistics provide holistic views. Big data techniques
- ❑ Validated static stats
  
- ❑ On-the-fly visualization (Lisbon University)
  
- ❑ ESASky



# gaia archive visualization



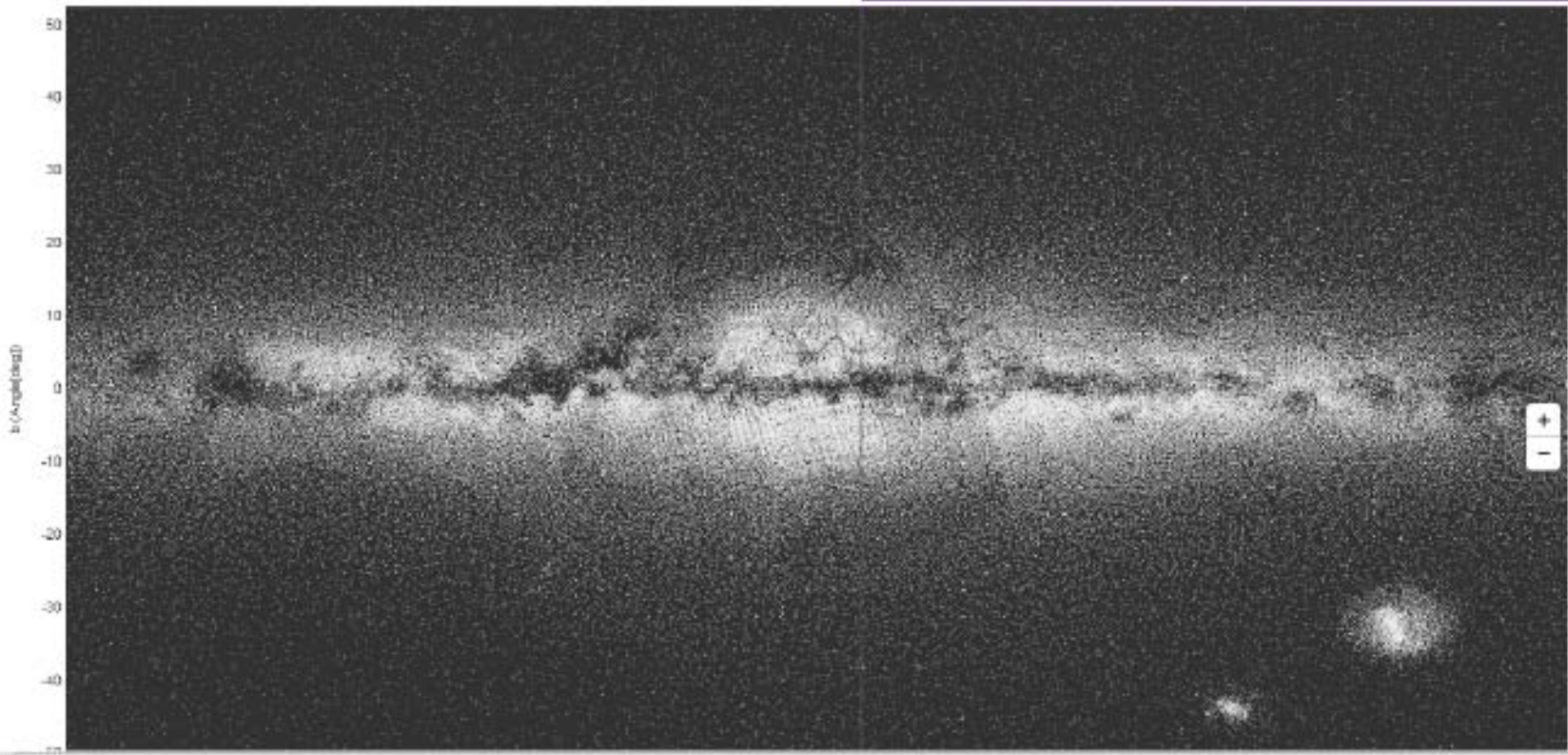
New window

Regions -

Q + X

Galactic Coordinate

Plenary, splinter: A. Moitinho





### Table Access Protocol (TAP) Query

Window TAP Registry Edit Interop Help

Select Service Use Service Resume Job Running Jobs

Metadata

Find:

Name  Descrip

- gaiaedr1 (8)
  - gaiaedr1\_aux\_qso\_icrf2\_r
  - gaiaedr1\_cepheid
  - gaiaedr1\_gaia\_source
  - gaiaedr1\_phot\_variable\_t
  - gaiaedr1\_phot\_variable\_t
  - gaiaedr1\_rhydrae
  - gaiaedr1\_tgas\_source
  - gaiaedr1\_variable\_summ

Service	Schema	Table	Columns	FKeys	Hints
Name	DataType	Indexed	Unit		
source_id	BIGINT	<input checked="" type="checkbox"/>			Unique source id
ra	DOUBLE	<input checked="" type="checkbox"/>	deg		Right ascension
dec	DOUBLE	<input checked="" type="checkbox"/>	deg		Declination
l	DOUBLE	<input checked="" type="checkbox"/>	deg		Galactic longitude
b	DOUBLE	<input checked="" type="checkbox"/>	deg		Galactic latitude
eci_lon	DOUBLE	<input checked="" type="checkbox"/>	deg		Ecliptic longitude
eci_lat	DOUBLE	<input checked="" type="checkbox"/>	deg		Ecliptic latitude
parallax	DOUBLE	<input checked="" type="checkbox"/>	mas		Parallax
pmra	DOUBLE	<input checked="" type="checkbox"/>	mas/yr		Proper motion in RA
pmdec	DOUBLE	<input checked="" type="checkbox"/>	mas/yr		Proper motion in Dec

Service Capabilities

Query Language: ADQL-2.0 Max Rows: 100000 (default) Uploads: 1000krow/

ADQL Text

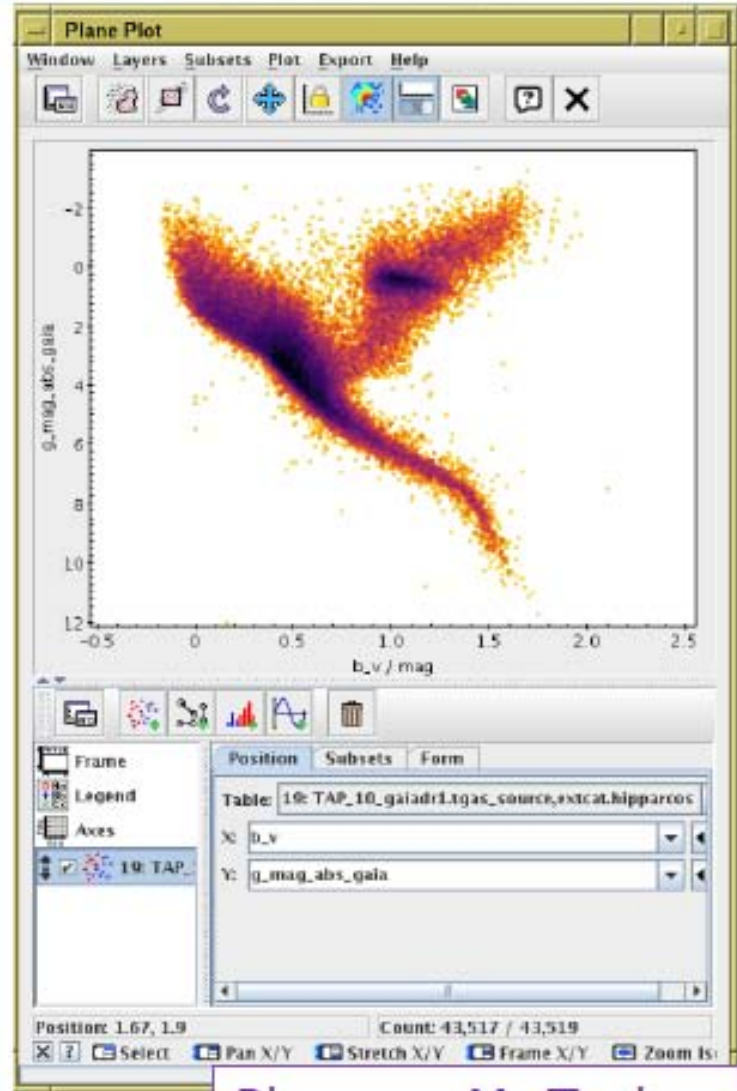
Mode: Synchronous

```

1
SELECT TOP 50000
  gaia.source_id,
  gaia.hip,
  gaia.phot,
  gaia.phot,
  hip.b_v
FROM gaiaedr1.tgas
INNER JOIN gaia
  ON gaia.source_id = tgas.source_id
  
```

Get the 5 astrometric parameters  
 Cone Search with Galactic coordinates  
 Getting Healpix indices  
 3-D plot  
 Gaia DR1 - Color and magnitude 1/2  
 Gaia DR1 - Color and magnitude 2/2  
 Gaia DR1 - Density by magnitude  
 Gaia DR1 - Pleiades density by parallax

Run Query



# Archive documentation

- Gaia Archive. Includes help and tutorials
  - <https://archives.esac.esa.int/gaia>
- Gaia DR1 papers <http://www.cosmos.esa.int/web/gaia/dr1#A&A>
- Online documentation (361 pages)
  - <http://gaia.esac.esa.int/documentation/GDR1/index.html>
- Data model documentation
  - <https://gaia.esac.esa.int/documentation/GDR1/datamodel/>
- ADQL: GAVO short course, UK ROE cookbook
  - <http://docs.g-vo.org/adql-gaia/html/index.html>
  - <https://gaia.ac.uk/science/gaia-data-release-1/adql-cookbook>
- Gaia Helpdesk. <https://support.cosmos.esa.int/gaia/>



